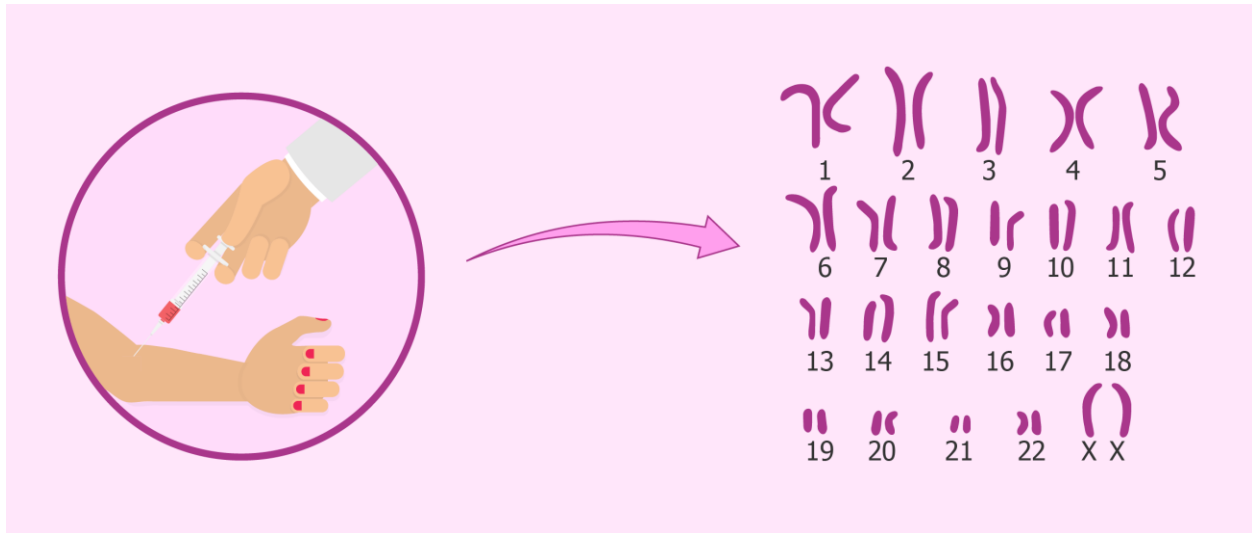


CLUE #6

Genetic Basis of Female Infertility



Researchers have begun to look into genetic causes of female infertility. Genome-wide association studies (GWASs) have been used to search for the genetic cause of Premature Ovarian Failure. A number of potential genes that may cause Premature Ovarian Failure have been found, including a gene named “PTHB1” and another gene named “ADAMTS19”. Larger follow-up studies are needed to confirm these findings.

Most diseases that have a genetic component are caused by variations in more than just one gene region. Environmental factors such as exercise, diet, exposure to radiation, etc. also may have an important influence. Having a certain sequence in a region of DNA therefore does not necessarily mean you will get the disease, but it may mean you are more susceptible to getting the disease.